

# Andover Hole 0004 Delivers 16.2m @ 2.09% Ni and 0.75% Cu

**Overall mineralised intersection returns 41.9m @ 1.10% Ni  
and 0.57% Cu coincident with the VC-07 EM conductor**

## **HIGHLIGHTS**

- ANDD0004 intersected several zones of massive nickel-copper sulphides, returning:
  - 4.1m @ 3.52% Nickel and 0.36% Copper from 354.8m within:
    - 8.5m @ 2.77% Nickel and 1.04% Copper from 354.8m, which is within:
      - 16.2m @ 2.09% Nickel and 0.75% Copper from 347.5m
- This nickel-copper sulphide intersection coincides with the VC-07 conductor, indicating the 1,050m-long and +200m-deep body may represent a substantial Ni-Cu deposit
- ANDD0005 and ANDD0006 tested the up and down-dip extensions from ANDD0004 and intersected broad mineralised envelopes containing multiple zones of semi-massive to massive Ni-Cu sulphides similar to ANDD0004 - assays for these two holes are pending
- ANDD0007 is in progress to test along-strike and down-plunge extensions of the sulphide mineralisation to the west of ANDD0004
- 30,000m diamond drilling program planned for 2021 to delineate a mineral resource within the mineralised body represented by the 1,050m-long VC-07 conductor

Azure Minerals Limited (ASX: AZS) (“Azure” or “the Company”) is pleased to report that massive sulphide mineralisation in drill hole ANDD0004 at the Andover Ni-Cu Project (60% Azure / 40% Creasy Group) has returned high grade zones of nickel and copper sulphide mineralisation.

The broad envelope of nickel-copper sulphide mineralisation previously reported from ANDD0004 (refer ASX 12 November 2020) returned an overall intersection of **41.9m @ 1.10% nickel and 0.57% copper**, confirming the potential of this mineralised system to host a substantial Ni-Cu deposit.



**Figure 1: ANDD0004 drill core**  
**Massive Ni-Cu sulphides @ 357.0m - 358.0m**  
**1.0m @ 4.05% Ni & 0.22% Cu**



**Figure 2: ANDD0004 drill core**  
**Matrix Ni-Cu sulphides @ 352.9m - 353.6m**  
**0.7m @ 2.64% Ni & 0.27% Cu**

Azure's Managing Director, Mr. Tony Rovira commented:

*"We continue to be very encouraged by the outstanding results that our Andover drilling program is delivering, and we're excited by the potential that this project continues to demonstrate with each drill hole.*

*"Modelling of the VC-07 EM conductor plate has, to date, proven to be very accurate, and importantly, wherever drilling has tested this conductor, significant nickel-copper sulphide mineralisation has been intersected. The high grade nickel and copper assays from the massive sulphides intersected in ANDD0004 and the coincident strong in-hole EM conductor support VC-07 as the geophysical signature of a fertile and potentially extensive nickel and copper-rich mineralised system.*

*"The deepest hole, ANDD0006, intersected the widest mineralised zone yet drilled, with an intersection width in excess of 53m, indicating that the mineralised zone is still open in the down-dip direction and potentially broadening with increasing depth.*

*"Our latest drill hole ANDD0007 is targeting the conductor plate with a 100m step-out to the west and additional drilling will continue to test the along-strike extensions of VC-07 in that direction. If VC-07 continues to deliver similar mineralised intersections along its more than one kilometre length, there is the potential here to define a substantial nickel-copper sulphide deposit."*

## OVERVIEW

To date, Azure has completed six diamond drill holes for a total of 2,025.9m at the Andover Ni-Cu Project. All six holes have intersected broad intervals containing substantial nickel-copper sulphide mineralisation. In every hole drilled to date, massive sulphide zones coincide with strong electromagnetic conductors detected by surface fixed-loop electromagnetic (FLTEM) surveys and subsequently confirmed by down-hole (DHTEM) surveys.

Assay results from ANDD0004 confirm that this nickel-copper sulphide mineralisation is clearly associated with the strong and continuous VC-07 EM conductor. Geophysical modelling indicates that VC-07 extends for at least 1,050m to the west-northwest and has a potential depth extent in excess of 150m-200m (see Figures 3 and 4).

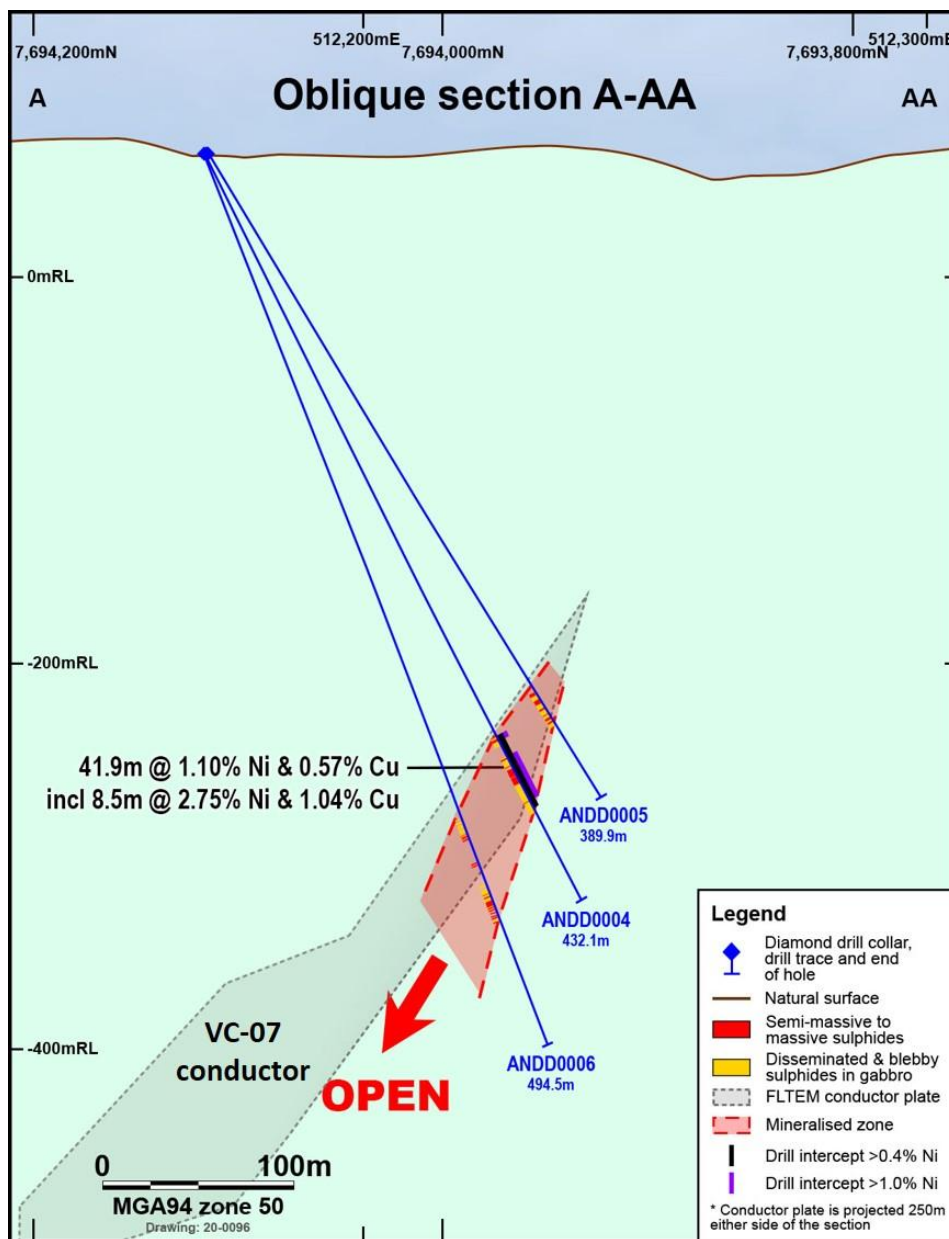


Figure 3: Section line A-AA (looking East) with drill holes and VC-07 conductor plate

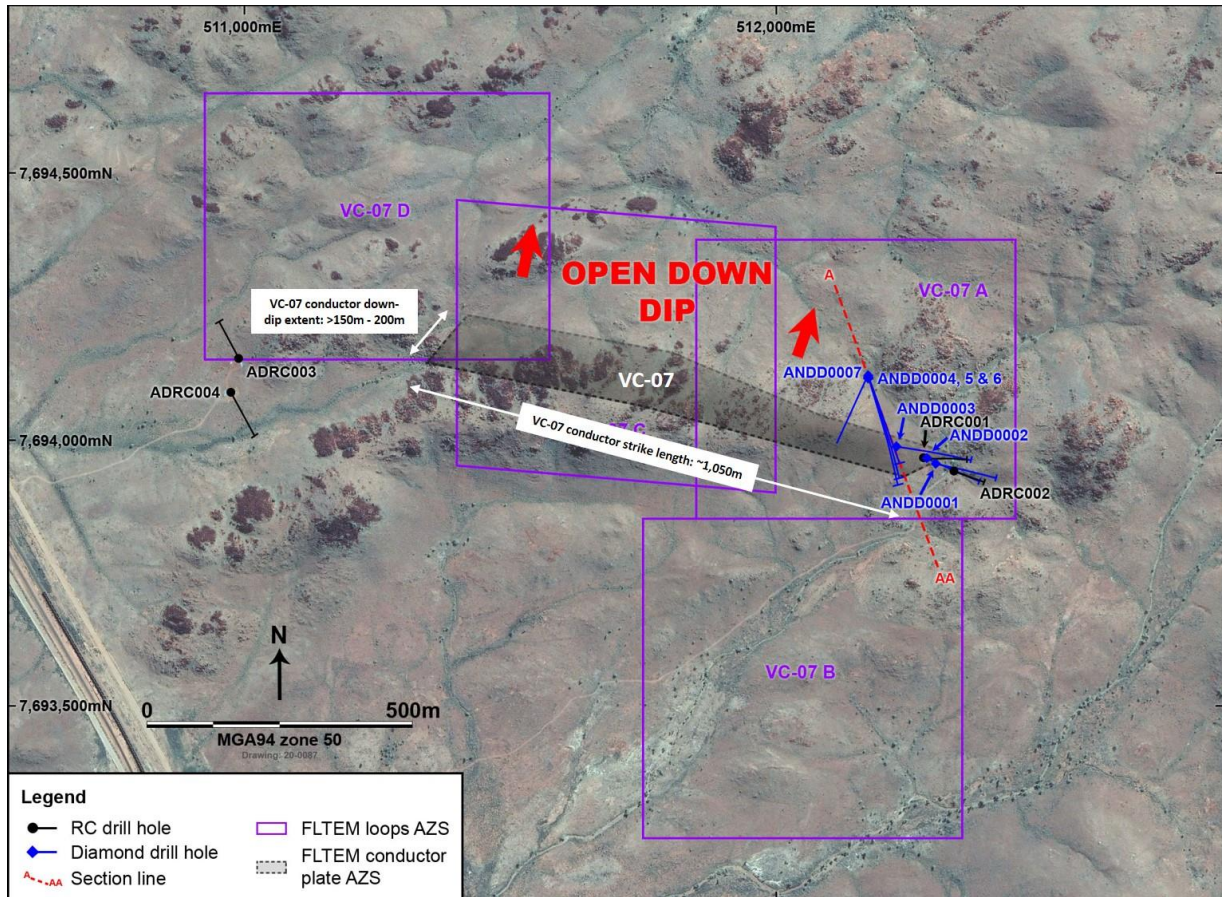


Figure 4: Andover - Drill holes, VC-07 conductor plate and section line A-AA

#### ANDD0004

ANDD0004 was designed to test the upper part of the eastern end of the VC-07 anomaly where FLTEM modelling indicated the conductor plate is at its shallowest. The hole drilled through a 41.9m-wide mineralised interval containing significant quantities of nickel and copper sulphide mineralisation in the form of massive, semi-massive, matrix, blebby and disseminated pentlandite (nickel sulphide), chalcopyrite (copper sulphide) and pyrrhotite (iron sulphide) hosted in gabbro and other mafic rocks.

Geophysical modelling predicted ANDD0004 would intersect the EM conductor plate between 350m-375m downhole. The drill hole entered the sulphide zone at 336m and exited at 378m downhole (refer ASX: 12 November 2020), confirming the accuracy of the modelling.

Significant mineralised intersections returned from ANDD004 are summarised in **Table 1**, with the most substantial interval of massive and semi-massive sulphides returning:

- **4.1m @ 3.52% Nickel and 0.36% Copper from 354.8m within;**
  - **8.5m @ 2.77% Nickel and 1.04% Copper from 354.8m which is within;**
  - **16.2m @ 2.08% Nickel and 0.75% Copper from 347.5m.**

These and several other nickel and copper-rich sulphide intersections are contained within an overall mineralised envelope of:

- **41.9m @ 1.10% Nickel and 0.57% Copper from 336.1m.**

Follow-up drilling to ANDD0004 also intersected substantial nickel-copper sulphide mineralisation both up-dip (ANDD0005) and down-dip (ANDD0006) (refer ASX: 24 November 2020 and 30 November 2020). Assay results for both these drill holes are pending.

ANDD0006 intersected a broad 53.6m-wide mineralised envelope containing multiple intervals of strong nickel-copper sulphide mineralisation approximately 60m down-dip from ANDD0004. This includes two intervals, 12.4m-wide and 5.5m-wide, of continuous matrix to massive nickel-copper sulphide mineralisation visually similar to the ANDD0004 high grade mineralised zones reported above.

Importantly, these three holes combine to define a vertical mineralised extent exceeding 100m with strong down-dip continuity of the mineralisation. The mineralised zone remains open to depth and further drilling is planned to test the deeper extensions as part of the accelerated 2021 exploration program.

**Table 1: Significant mineralised intersections in ANDD0004**

HOLE No	DEPTH (m)		INTERCEPT LENGTH (m)	GRADE	
	FROM	TO		Ni (%)	Cu (%)
ANDD0004	336.1	341.2	5.1	0.82	0.56
	336.1	338.7	2.6	1.34	0.67
incl	337.55	338.7	1.15	2.05	0.98
and	347.5	374.15	26.65	1.50	0.71
<b>incl</b>	<b>347.5</b>	<b>363.7</b>	<b>16.2</b>	<b>2.09</b>	<b>0.75</b>
<b>incl</b>	<b>354.8</b>	<b>363.3</b>	<b>8.5</b>	<b>2.77</b>	<b>1.04</b>
<b>incl</b>	<b>354.8</b>	<b>358.85</b>	<b>4.05</b>	<b>3.52</b>	<b>0.36</b>
and	368.4	369.2	0.8	2.16	0.58
and	373.85	374.15	0.3	2.58	0.25
overall	336.1	378.0	41.9*	1.10	0.57
Mineralised intersections calculated using a 0.4% Ni grade cut-off for overall zones and 1.0% Ni for included high grade zones					
* Overall mineralised envelope intersection includes intervals of 6.3m and 3.8m of internal dilution <0.4% Ni					

## **LOOKING FORWARD**

The first three holes that targeted the VC-07 conductor (ANDD0004, 0005 and 0006) successfully intersected broad intervals of significant nickel-copper sulphide mineralisation which has been confirmed by the return of positive assay results from ANDD0004.

DHTEM surveying in ANDD0004 identified an obvious and strong (circa 12,000 Siemens) in-hole electromagnetic conductor that is clearly related to the massive Ni-Cu sulphide intersection. Modelling of the DHTEM data indicates that the conductor continues for significant distances both laterally and up and down-dip. Follow-up DHTEM surveying in ANDD0005 and 0006, to be undertaken in mid-December, will provide greater definition of the vertical / down-dip extent of the VC-07 conductor.

The next hole, ANDD0007 (in progress), is targeting along-strike and down-plunge extensions approximately 100m to the west-northwest of the mineralisation intersected on the ANDD0004-0005-0006 section.

Additional diamond drilling is planned to test the 1,050m strike extension of the VC-07 conductor plate further to the west-northwest, as well testing as the down-dip extensions which could exceed 200m of vertical extent of sulphide mineralisation.

To accelerate the testing of VC-07, Azure has invited tenders for a 30,000m diamond drilling program utilising three drill rigs to be carried out during 2021.

Additionally, **12 separate bedrock-hosted EM conductor anomalies** have been identified elsewhere within the Andover project area. Drilling to test high-priority conductors is being planned and, subject to drill rig availability, likely to commence in the first quarter of 2021.

**Table 2: Location data for Andover drill holes**

HOLE No.	EAST (mE)	NORTH (mN)	ELEVATION (mASL)	AZIMUTH	DIP	TOTAL DEPTH (m)	COMMENT
ANDD0001	512300	7693954	58.5	100	-50	175.2	Completed
ANDD0002	512282	7693965	58.0	110	-60	210.0	Completed
ANDD0003	512226	7693986	66.3	099	-63	324.2	Completed
ANDD0004	512174	7694114	63.9	160	-65	432.1	Completed
ANDD0005	512174	7694113	63.9	160	-59	389.9	Completed
ANDD0006	512174	7694115	63.9	160	-70	494.5	Completed
ANDD0007	512172	7694115	63.9	205	-72	TBC	In Progress

Authorised for release by Mr Brett Dickson, Company Secretary.

**-ENDS-**

**For enquiries, please contact:**

**Tony Rovira**  
 Managing Director  
 Azure Minerals Limited  
 Ph: +61 8 9481 2555

**Media & Investor Relations**  
 Michael Weir / Cameron Gilenko  
 Citadel-MAGNUS  
 Ph: +61 8 6160 4903

or visit [www.azureminerals.com.au](http://www.azureminerals.com.au)

#### **COMPETENT PERSON STATEMENT**

*Information in this report that relates to Exploration Results for the Andover Project is based on information compiled by Graham Leaver, who is a Member of The Australasian Institute of Geoscientists and fairly represents this information. Mr Leaver has sufficient experience relevant to the style of mineralisation and type of deposit under consideration, and to the activities undertaken, to qualify as a Competent Person as defined in the 2012 Edition of the Joint Ore Reserves Committee (JORC) Australasian Code for Reporting of Exploration Results, Mineral Resources and Ore Reserves. Mr Leaver is a full-time employee of Azure Minerals Limited and consents to the inclusion in the report of the matters based on his information in the form and context in which it appears.*

*Information in this report that relates to previously reported Exploration Results has been crossed-referenced in this report to the date that it was reported to ASX. Azure Minerals Limited confirms that it is not aware of any new information or data that materially affects information included in the relevant market announcements.*

# JORC Code, 2012 Edition – Table 1

Section 1: Sampling Techniques and Data		
Criteria	JORC Code Explanation	Commentary
<b>Sampling techniques</b>	<p><i>Nature and quality of sampling (eg cut channels, random chips, or specific specialised industry standard measurement tools appropriate to the minerals under investigation, such as down hole gamma sondes, or handheld XRF instruments, etc). These examples should not be taken as limiting the broad meaning of sampling.</i></p> <p><i>Include reference to measures taken to ensure sample representivity and the appropriate calibration of any measurement tools or systems used.</i></p> <p><i>Aspects of the determination of mineralisation that are Material to the Public Report.</i></p> <p><i>In cases where 'industry standard' work has been done this would be relatively simple (eg 'reverse circulation drilling was used to obtain 1 m samples from which 3 kg was pulverised to produce a 30 g charge for fire assay'). In other cases more explanation may be required, such as where there is coarse gold that has inherent sampling problems. Unusual commodities or mineralisation types (eg submarine nodules) may warrant disclosure of detailed information.</i></p>	<p>Targets were sampled by diamond core drilling. Drill core was sampled in intervals from 0.30m to 1.44m, guided by changes in geology.</p> <p>Drill hole collar locations were determined by hand-held GPS.</p> <p>Sample preparation was undertaken at Bureau Veritas Minerals, Canning Vale laboratory, where the samples received were sorted and dried. Primary preparation crushed each whole sample to 10mm and then to 3mm. The samples were then split with a riffle splitter to obtain a sub-fraction which was pulverised via robotic pulveriser. The resultant pulverised material was placed in a barcoded sample packet for analysis. The barcoded packet is scanned when weighing samples for their respective analysis. Internal screen QAQC is done at 90% passing 75um.</p> <p>All samples were analysed by methods:</p> <ul style="list-style-type: none"> <li>• FA0002 – lead collection fire assay/ICP-AES for Au, Pd and Pt</li> <li>• ICP102 – 4-acid digest/ICP-OES for Al, Ca, Co, Cr, Cu, Fe, K, Mg, Mn, Na, Ni, P, S, Sc, Ti, V and Zn, and</li> <li>• ICP302 – 4-acid digest/ICP-MS for Ag, As, Ba, Cd, Li, Mo, Pb, Sr, Y and Zr.</li> </ul> <p>These techniques are considered a total digest for all relevant minerals.</p>
<b>Drilling Techniques</b>	<p><i>Drill type (eg core, reverse circulation, open- hole hammer, rotary air blast, auger, Bangka, sonic, etc) and details (eg core diameter, triple or standard tube, depth of diamond tails, face-sampling bit or other type, whether core is oriented and if so, by what method, etc).</i></p>	<p>Drilling technique for all holes was diamond drilling with HQ-size (63.5mm diameter) from surface and NQ2-size (50.6mm diameter) core to the final depth.</p> <p>Drill holes are angled and core is being oriented for structural interpretation.</p>
<b>Drill Sample Recovery</b>	<p><i>Method of recording and assessing core and chip sample recoveries and results assessed.</i></p> <p><i>Measures taken to maximise sample recovery and ensure representative nature of the samples.</i></p> <p><i>Whether a relationship exists between sample recovery and grade and whether sample bias may have occurred due to preferential loss/gain of fine/coarse material.</i></p>	<p>Diamond core was reconstructed into continuous runs. Depths were measured from the core barrel and checked against marked depths on the core blocks. Core recoveries were logged and recorded in the database.</p> <p>Core recoveries are very high with &gt;90% of the drill core having recoveries of &gt;98%.</p> <p>There is no discernible relationship between recovery and grade, and therefore no sample bias.</p>

<b>Section 1: Sampling Techniques and Data</b>		
<b>Logging</b>	<p><i>Whether core and chip samples have been geologically and geotechnically logged to a level of detail to support appropriate Mineral Resource estimation, mining studies and metallurgical studies.</i></p> <p><i>Whether logging is qualitative or quantitative in nature. Core (or costean, channel, etc) photography.</i></p> <p><i>The total length and percentage of the relevant intersections logged.</i></p>	<p>Detailed core logging was carried out with recording of weathering, lithology, alteration, veining, mineralisation, structure, mineralogy, RQD and core recovery.</p> <p>Drill core logging is qualitative.</p> <p>Drill core was photographed, wet and without flash, in core trays prior to sampling.</p> <p>Core from the entire drill hole was logged.</p>
<b>Sub-sampling techniques and sample preparation</b>	<p><i>If core, whether cut or sawn and whether quarter, half or all core taken.</i></p> <p><i>If non-core, whether riffled, tube sampled, rotary split, etc and whether sampled wet or dry.</i></p> <p><i>For all sample types, the nature, quality and appropriateness of the sample preparation technique.</i></p> <p><i>Quality control procedures adopted for all sub-sampling stages to maximise representivity of samples.</i></p> <p><i>Measures taken to ensure that the sampling is representative of the in-situ material collected, including for instance results for field duplicate/second-half sampling.</i></p> <p><i>Whether sample sizes are appropriate to the grain size of the material being sampled</i></p>	<p>Drill core was sawn in half or quarter using a core saw. All samples were half or quarter core and were collected from the same side of the core.</p> <p>The sample preparation followed industry best practice. Sample preparation was undertaken at Bureau Veritas Minerals, Canning Vale laboratory, where the samples received were sorted and dried.</p> <p>Primary preparation crushed each whole sample to 10mm and then to 3mm. The samples were then split with a riffle splitter to obtain a sub-fraction which was pulverised via robotic pulveriser. The resultant pulverised material was placed in a barcoded sample packet for analysis.</p> <p>The barcoded packet is scanned when weighing samples for their respective analysis. Internal screen QAQC is done at 90% passing 75um.</p> <p>The sample sizes are considered appropriate to the grain size of the material being sampled.</p>
<b>Quality of assay data and laboratory tests</b>	<p><i>The nature, quality and appropriateness of the assaying and laboratory procedures used and whether the technique is considered partial or total.</i></p> <p><i>For geophysical tools, spectrometers, handheld XRF instruments, etc, the parameters used in determining the analysis including instrument make and model, reading times, calibrations factors applied and their derivation, etc.</i></p> <p><i>Nature of quality control procedures adopted (eg standards, blanks, duplicates, external laboratory checks) and whether acceptable levels of accuracy (ie lack of bias) and precision have been established.</i></p>	<p>All samples were analysed by methods:</p> <ul style="list-style-type: none"> <li>• FA0002 – lead collection fire assay/ICP-AES for Au, Pd and Pt</li> <li>• ICP102 – 4-acid digest/ICP-OES for Al, Ca, Co, Cr, Cu, Fe, K, Mg, Mn, Na, Ni, P, S, Sc, Ti, V and Zn, and</li> <li>• ICP302 – 4-acid digest/ICP-MS for Ag, As, Ba, Cd, Li, Mo, Pb, Sr, Y and Zr.</li> </ul> <p>These techniques are considered a total digest for all relevant minerals.</p> <p>Duplicate, standard and blank check samples were submitted with drill core samples.</p>
<b>Verification of sampling and assaying</b>	<p><i>The verification of significant intersections by either independent or alternative company personnel.</i></p> <p><i>The use of twinned holes.</i></p>	<p>Senior technical personnel from the Company (Project Geologists +/- Exploration Manager) logged and verified significant intersections.</p> <p>Primary data was collected by employees of the Company at the project site. All measurements and observations were recorded digitally and entered into the Company's database.</p>



<b>Section 1: Sampling Techniques and Data</b>		
	<p><i>Documentation of primary data, data entry procedures, data verification, data storage (physical and electronic) protocols.</i></p> <p><i>Discuss any adjustment to assay data</i></p>	<p>Data verification and validation is checked upon entry into the database.</p> <p>Digital data storage is managed by an independent data management company</p> <p>No adjustments or calibrations have been made to any assay data.</p>
<b>Location of data points</b>	<p><i>Accuracy and quality of surveys used to locate drill holes (collar and down-hole surveys), trenches, mine workings and other locations used in Mineral Resource estimation.</i></p> <p><i>Specification of the grid system used.</i></p> <p><i>Quality and adequacy of topographic control.</i></p>	<p>Drill holes were pegged by Company personnel using a handheld GPS, accurate to <math>\pm 3m</math>.</p> <p>The grid system used is MGA94 Zone 50 for easting, northing and RL.</p> <p>Available state contour data and GPS recorded RL has been used which is adequate given the early stage of the project.</p>
<b>Data spacing and distribution</b>	<p><i>Data spacing for reporting of Exploration Results.</i></p> <p><i>Whether the data spacing and distribution is sufficient to establish the degree of geological and grade continuity appropriate for the Mineral Resource and Ore Reserve estimation procedure(s) and classifications applied.</i></p> <p><i>Whether sample compositing has been applied</i></p>	<p>Holes were individually drilled into electromagnetic targets and were not setup on a regular spacing.</p> <p>Downhole sample interval spacings are selected based on identification of intersected mineralisation.</p> <p>The project is at early exploration drilling stage, geological and grade continuity is not yet established.</p> <p>No sample compositing has been applied.</p>
<b>Orientation of data in relation to geological structure</b>	<p><i>Whether the orientation of sampling achieves unbiased sampling of possible structures and the extent to which this is known, considering the deposit type.</i></p> <p><i>If the relationship between the drilling orientation and the orientation of key mineralised structures is considered to have introduced a sampling bias, this should be assessed and reported if material.</i></p>	<p>Drilling was designed to intersect the modelled EM targets and geological features were not factored at this early stage of exploration.</p> <p>No sampling bias has been identified due to the early stage of the project.</p>
<b>Sample security</b>	<p><i>The measures taken to ensure sample security</i></p>	<p>Assay samples were placed in calico sample bags, each is pre-printed with a unique sample number.</p> <p>Calico bags were placed in a poly weave bag and cabled tied closed at the top. Poly weave bags were placed inside a large bulka bag prior to transport.</p> <p>Samples were picked up and delivered to the laboratory by a transport contractor.</p>
<b>Audits or reviews</b>	<p><i>The results of any audits or reviews of sampling techniques and data.</i></p>	<p>No audits have been completed. Review of QAQC data has been carried out by company geologists</p>

<b>Section 2: Reporting of Exploration Results</b>		
<b>Criteria</b>	<b>JORC Code Explanation</b>	<b>Commentary</b>
<b>Mineral tenement and land tenure status</b>	<p><i>Type, reference name/number, location and ownership including agreements or material issues with third parties such as joint ventures, partnerships, overriding royalties, native title interests, historical sites, wilderness or national park and environmental settings.</i></p> <p><i>The security of the tenure held at the time of reporting along with any known impediments to obtaining a licence to operate in the area.</i></p>	<p>Exploration Licence E47/2481 is a Joint Venture between Azure Minerals Ltd (60%) and Croydon Gold Pty Ltd (40%), a private subsidiary of the Creasy Group.</p> <p>The tenement is centred 35km southeast of the major mining/service town of Karratha in northern WA. The tenement is approximately 12km x 6km in size with its the northern boundary located 2km south of the town of Roebourne.</p> <p>Approximately 30% of the tenement area is subject to either pre-existing infrastructure, Class "C" Reserves and registered Heritage sites. Written permission is required to access these areas which are outside the current areas of exploration focus.</p> <p>The tenement has been kept in good standing with all regulatory and heritage approvals having been met. There are no known impediments to operate in the area.</p>
<b>Exploration done by other parties</b>	<p><i>Acknowledgment and appraisal of exploration by other parties.</i></p>	<p>Limited historical drilling has been completed within the Andover Complex. The following phases of drilling works with results have been undertaken:</p> <p>1986-1987: Greater Pacific Investment; 6 core holes. Intersected elevated values of nickel (up to 1.0% Ni) and copper (up to 0.41% Cu). No PGEs were detected.</p> <p>1996-1997: Dragon Mining; Stream sediment sampling, 5 RC holes in the NE at Mt Hall Ni-Cu target. Zones of noted sulphides (in sediments &amp; gabbro) were selectively sampled with no anomalous results. Rare intervals of ultramafics were sampled.</p> <p>1997-1998: BHP Minerals; 2 RC/DD holes were drilled within the Andover project area. Both holes intersected strongly magnetic serpentinite containing elevated values of nickel (up to 0.29% Ni), copper (up to 0.26% Cu) and cobalt (up to 332ppm Co) but no anomalous PGE's.</p> <p>2012-2018: Croydon Gold; VTEM Survey, soil and rock chip sampling, 7 RC holes tested 4 geophysical / geological targets. Significant Ni-Cu-Co sulphide mineralisation was intersected in two locations.</p>
<b>Geology</b>	<p><i>Deposit type, geological setting and style of mineralisation.</i></p>	<p>The Andover Complex is an Archean-age layered mafic-ultramafic intrusion covering an area of about 200km<sup>2</sup> that intruded the West Pilbara Craton.</p> <p>The Andover Complex comprises a lower layered ultramafic zone 1.3km thick and an overlying 0.8km gabbroic layer intruded by dolerites.</p> <p>Ni-Cu-Co sulphide mineralisation occurs at lithological boundaries, either between different types of gabbro's, or between mafics and ultramafics.</p> <p>The current interpretation of the mineralized sulphides suggests a magmatic origin heavily overprinted by one or several hydrothermal events.</p>

<b>Section 2: Reporting of Exploration Results</b>		
<b>Drill hole information</b>	<p><i>A summary of all information material to the understanding of the exploration results including a tabulation of the following information for all Material drill holes:</i></p> <ul style="list-style-type: none"> <li>• <i>easting and northing of the drill hole collar</i></li> <li>• <i>elevation or RL (Reduced Level – elevation above sea level in metres) of the drill hole collar</i></li> <li>• <i>dip and azimuth of the hole</i></li> <li>• <i>down hole length and interception depth</i></li> <li>• <i>hole length.</i></li> </ul> <p><i>If the exclusion of this information is justified on the basis that the information is not Material and this exclusion does not detract from the understanding of the report, the Competent Person should clearly explain why this is the case.</i></p>	Refer to tables in the report and notes attached thereto which provide all relevant details.
<b>Data aggregation methods</b>	<p><i>In reporting Exploration Results, weighting averaging techniques, maximum and/or minimum grade truncations (eg cutting of high grades) and cut-off grades are usually Material and should be stated.</i></p> <p><i>Where aggregate intercepts incorporate short lengths of high-grade results and longer lengths of low-grade results, the procedure used for such aggregation should be stated and some typical examples of such aggregations should be shown in detail.</i></p> <p><i>The assumptions used for any reporting of metal equivalent values should be clearly stated.</i></p>	<p>Length weighted average grade calculations have been applied to reported assay intervals.</p> <p>No maximum and/or minimum grade truncations (eg cutting of high grades) or cut-off grades were applied.</p> <p>High grade intervals internal to broader mineralised zones are reported as included zones - refer to drill intercept and detail tables.</p> <p>No metal equivalents were reported.</p> <p>Reported nickel and copper mineralised intersections for the drilling are based on intercepts using a lower grade cut-off of 0.4% Ni for the overall mineralised zones and 1.0% Ni for the included high grade mineralised zones.</p>
<b>Relationship between mineralisation widths and intercept lengths</b>	<p><i>These relationships are particularly important in the reporting of Exploration Results.</i></p> <p><i>If the geometry of the mineralisation with respect to the drill hole angle is known, its nature should be reported.</i></p> <p><i>If it is not known and only the down hole lengths are reported, there should be a clear statement to this effect (eg 'down hole length, true width not known').</i></p>	<p>Geological controls and orientations of the mineralised zone are unconfirmed at this time and therefore all mineralised intersections are reported as "intercept length" and may not reflect true width.</p> <p>Drilling was designed to intersect the modelled EM targets and geological features have not been factored at this early stage of exploration. The true direction of mineralisation is not determined at this stage.</p>

<b>Section 2: Reporting of Exploration Results</b>		
<b>Diagrams</b>	<i>Appropriate maps and sections (with scales) and tabulations of intercepts should be included for any significant discovery being reported These should include, but not be limited to a plan view of drill hole collar locations and appropriate sectional views.</i>	Refer to figures in the report.
<b>Balanced reporting</b>	<i>Where comprehensive reporting of all Exploration Results is not practicable, representative reporting of both low and high grades and/or widths should be practiced to avoid misleading reporting of Exploration Results.</i>	The Company believes that the ASX announcement is a balanced report with all material results reported.
<b>Other substantive exploration data</b>	<i>Other exploration data, if meaningful and material, should be reported including (but not limited to): geological observations; geophysical survey results; geochemical survey results; bulk samples – size and method of treatment; metallurgical test results; bulk density, groundwater, geotechnical and rock characteristics; potential deleterious or contaminating substances.</i>	Everything meaningful and material is disclosed in the body of the report. Geological observations have been factored into the report.
<b>Further work</b>	<i>The nature and scale of planned further work (eg tests for lateral extensions or large-scale step out drilling).  Diagrams clearly highlighting the areas of possible extensions, including the main geological interpretations and future drilling areas, provided this information is not commercially sensitive.</i>	Additional diamond drilling to follow-up the sulphide intersections.  Downhole EM surveying.